



***Promoting a Trauma-Informed Approach in
Both Policy and Practice Open Discussion***

February 26, 2015

SHERRY PETERS, MSW, ACSW
Senior Policy Associate

Polling: Who Is Participating Today?



Polling: Participation in 3 Part Trauma Series?



3

© 2014 NATIONAL TECHNICAL ASSISTANCE CENTER FOR CHILDREN'S MENTAL HEALTH, GEORGETOWN UNIVERSITY

Quick Review of the ACE Study

Adverse Childhood Experiences Are Common

Household dysfunction:

Substance abuse	27%
Parental sep/divorce	23%
Mental illness	17%
Battered mother	13%
Criminal behavior	6%

Abuse:

Psychological	11%
Physical	28%
Sexual	21%

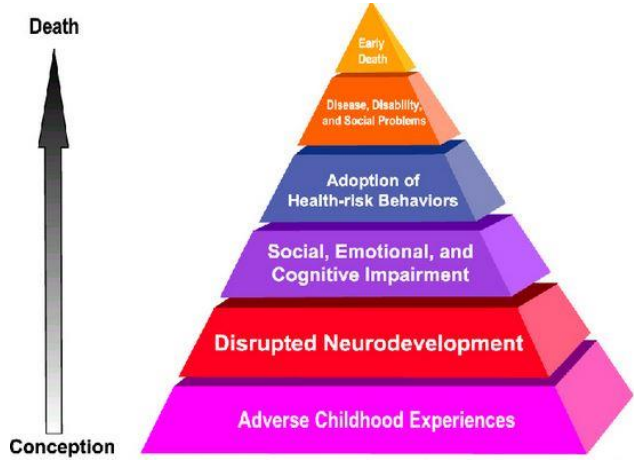
Neglect:

Emotional	15%
Physical	10%

4

© 2014 NATIONAL TECHNICAL ASSISTANCE CENTER FOR CHILDREN'S MENTAL HEALTH, GEORGETOWN UNIVERSITY

ADVERSE CHILDHOOD EXPERIENCES

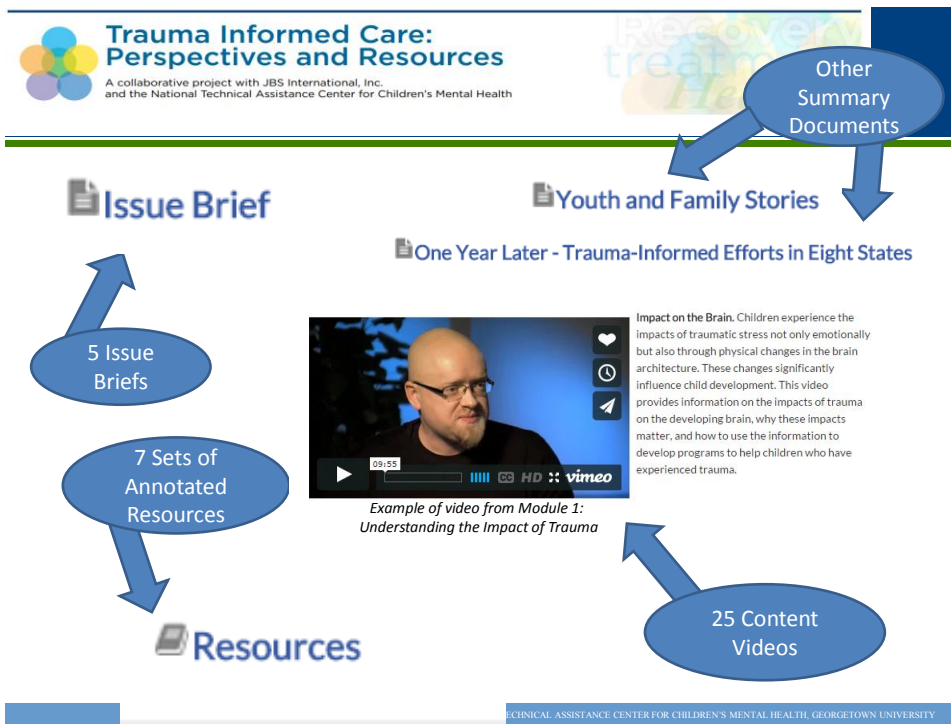


<http://www.cdc.gov/violenceprevention/acestudy/>

LINKS TO THE TOOL:

<http://gucchdtcenter.georgetown.edu/TraumaInformedCare/>
or <http://trauma.jbsinternational.com/traumatool>

The screenshot shows the website for 'Trauma Informed Care: Perspectives and Resources'. The title is 'Trauma Informed Care: Perspectives and Resources'. Below the title, it says 'A collaborative project with JBS International, Inc. and Georgetown University National Technical Assistance Center for Children's Mental Health'. A callout bubble points to this text with the label 'Partnership with JBS International'. On the left, there is a sidebar with a list of modules. A callout bubble points to this list with the label '8 Modules'. In the center, there is a video player titled 'Introductory Video to the tool' showing the text 'Trauma Informed Care' and the number '9'. A callout bubble points to the number '9' with the label '9 Introductory Videos'. The video player also shows a heart icon, a clock icon, and a play button icon.



First Webinar in the Series

December 18, 2014, 1:00-2:30 PM E.T.

Healing from Trauma-Young Adult and Family Perspectives and Recommendations

Trauma affects youth, young adults and families in dramatic ways. It changes their lives forever and shapes their worldview.

Presenters:

Brianne Masselli

*Director Technical Assistance
Youth MOVE National*

Teresa King

*Training & Technical Assistance Family Specialist
Georgetown University National Technical Assistance
Center for Children's Mental Health*

Second Webinar in the Series

January 22, 2015, 1:00-2:30 PM E.T.

Supporting Champions for Cross-System Collaboration in Trauma Informed Care

Presenters: Teams from Virginia and Indiana.

- Focus on state and local leadership in promoting collaborative efforts in policy and practice changes for whole systems to become more trauma-informed.
- Indiana team highlighted their "*Change Team*" initiatives.
- Virginia team highlighted not only their successful Richmond "*Trauma Informed Community Network*" but also their beginning effort to build statewide capacity for policy and practice change across child-serving systems.

Third Webinar in the Series

February 19, 2015, 1:00-2:30 PM E.T.

Building Capacity for Trauma Informed Provider Organizations: Community-Based and Residential

Presenters: Teams from South Carolina and Mississippi

- All personnel need to be trauma-informed, not just the clinicians.
- South Carolina - statewide efforts to train everyone in regional cross-system events
- Mississippi - statewide training efforts to change policies and practices and outcomes in both community-based and residential settings

Questions from Participants

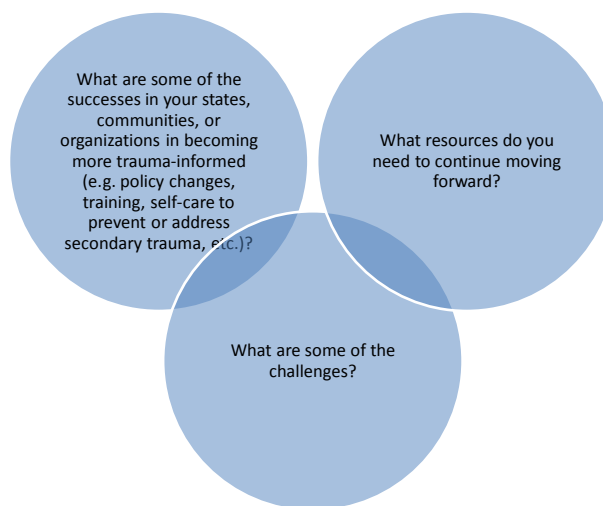
Unanswered questions
leftover from the webinars

Follow-up questions or
comments

11

© 2014 NATIONAL TECHNICAL ASSISTANCE CENTER FOR CHILDREN'S MENTAL HEALTH, GEORGETOWN UNIVERSITY

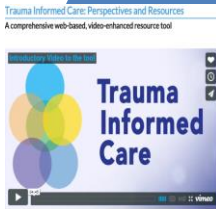
Discussion Questions



12

© 2014 NATIONAL TECHNICAL ASSISTANCE CENTER FOR CHILDREN'S MENTAL HEALTH, GEORGETOWN UNIVERSITY

Web Link for “Trauma Informed Care: Perspectives and Resources”



<http://gucchdtacenter.georgetown.edu/TraumaInformedCare/>

13

© 2014 NATIONAL TECHNICAL ASSISTANCE CENTER FOR CHILDREN'S MENTAL HEALTH, GEORGETOWN UNIVERSITY

Links

Evaluation Form

<https://www.surveymonkey.com/s/TACenterWebinarEvaluation>



Follow us on Twitter [@TA_Center](#)



Like us on Facebook? [National Technical Assistance Center for Children's Mental Health](#)



Connect with us on LinkedIn? [Georgetown University National Technical Assistance Center for Children's Mental Health](#)

© 2014 NATIONAL TECHNICAL ASSISTANCE CENTER FOR CHILDREN'S MENTAL HEALTH, GEORGETOWN UNIVERSITY