



What Works?

A Webinar Series on Effective Early Childhood Mental Health Consultation

*Presented by the Georgetown University
Center for Child and Human Development
with sponsorship from*

The A.L. Mailman Family Foundation

Moderated by Kathy Hepburn, GUCCHD
Technical support by Kevin Enright, GUCCHD

Chat (Q & A)

Kathy PPT

What Works ?



What Works?

A Webinar Series on Effective Early Childhood Mental Health Consultation

Presented by the Georgetown University Center for Child and Human Development

with sponsorship from

The A.L. Mailman Family Foundation

Moderated by Kathy Hepburn, GUCCHD
Technical support by Kevin Enright, GUCCHD

Use the Chat (Q&A) pod to ask a question or respond to a general question to the audience.

Question:

Logistics

- ★ Close all file sharing applications and streaming music and video
- ★ Send questions during the webinar that will be held for Q&A periods
- ★ After the webinar:
 - Evaluation
 - Archives, support materials, and unanswered questions at :
<http://gucchd.georgetown.edu/90642.html>

Webinar Series

	Webinar	Dates in 2010
✓	An Introduction to Effective Early Childhood Mental Health Consultation	April 28
✓	Preparing and Supporting the Work Force, Part 1	May 26
✓	Preparing the Supporting the Work Force, Part 2	June 30
✓	High Quality Services	July 28
✓	Relationships and Readiness	Sept. 29
✓	Evaluating Early Childhood Mental Health Consultation	Oct. 27
✓	Building Capacity, Part 1:	Nov. 17
	Building Capacity, Part 2:	Dec. 16

For brief descriptions of each webinar, go to
<http://gucchd.georgetown.edu/90642.html>

Webinar #8

Building Capacity 2: *Strategic Partnerships, Community Engagement, Funding and Impacting Policies*

Presenters:



Marla Himmeger

Ohio Department of Mental



Karen Freel

Ounce of Prevention Fund, IL



Ashleigh Kirk

Illinois Children's Mental
Health Partnership



Geoff Nagle

Tulane University , LA

December 15, 2010

Today's Webinar

- ★ Revisit key study findings and essential features of high quality ECMH consultation services
- ★ Describe key infrastructure elements that support sustainability of effective ECMHC programs and services
- ★ Learn three program approaches to:
 - Strategic partnerships and community engagement,
 - Maximizing funding opportunities, and
 - Impacting policy
- ★ Identify strategies, tools and resources that guide infrastructure development to support effective and sustainable ECMHC services.
- ★ Share links for additional information

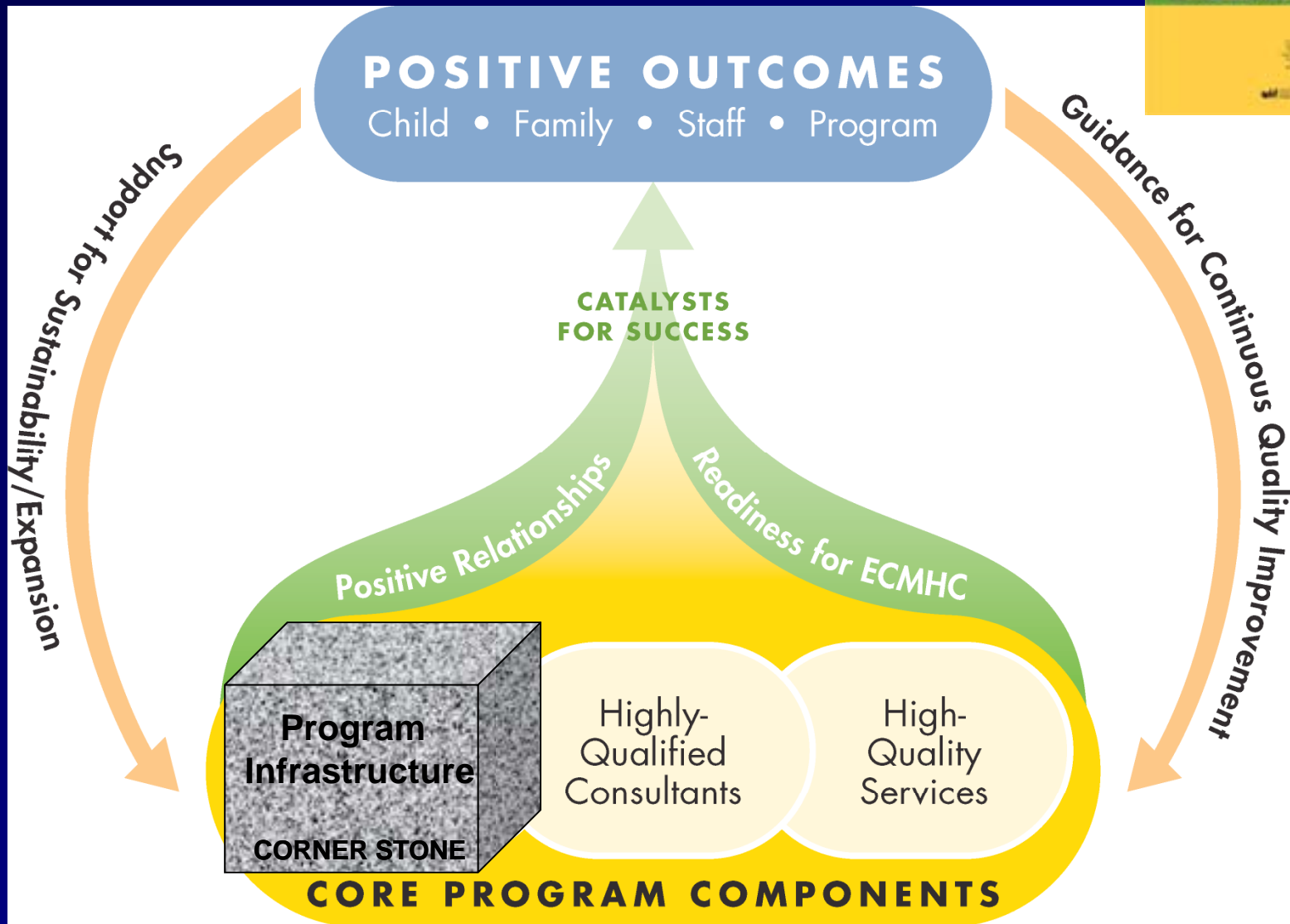


Sustainability

- ★ Sustainability (sə-stān'ə-bil'ə-ti)
 - To keep supplied with necessities; provide for; endure; withstand; strengthen

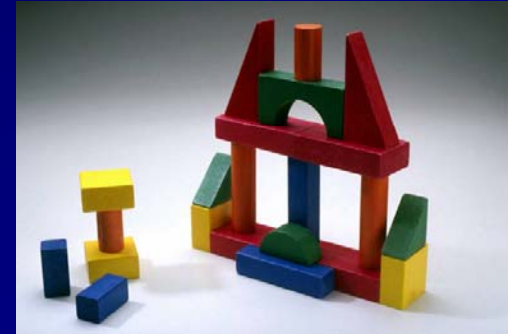
“If it’s the last thing you do...it’s the last thing you do “

An Emerging Model for ECMHC



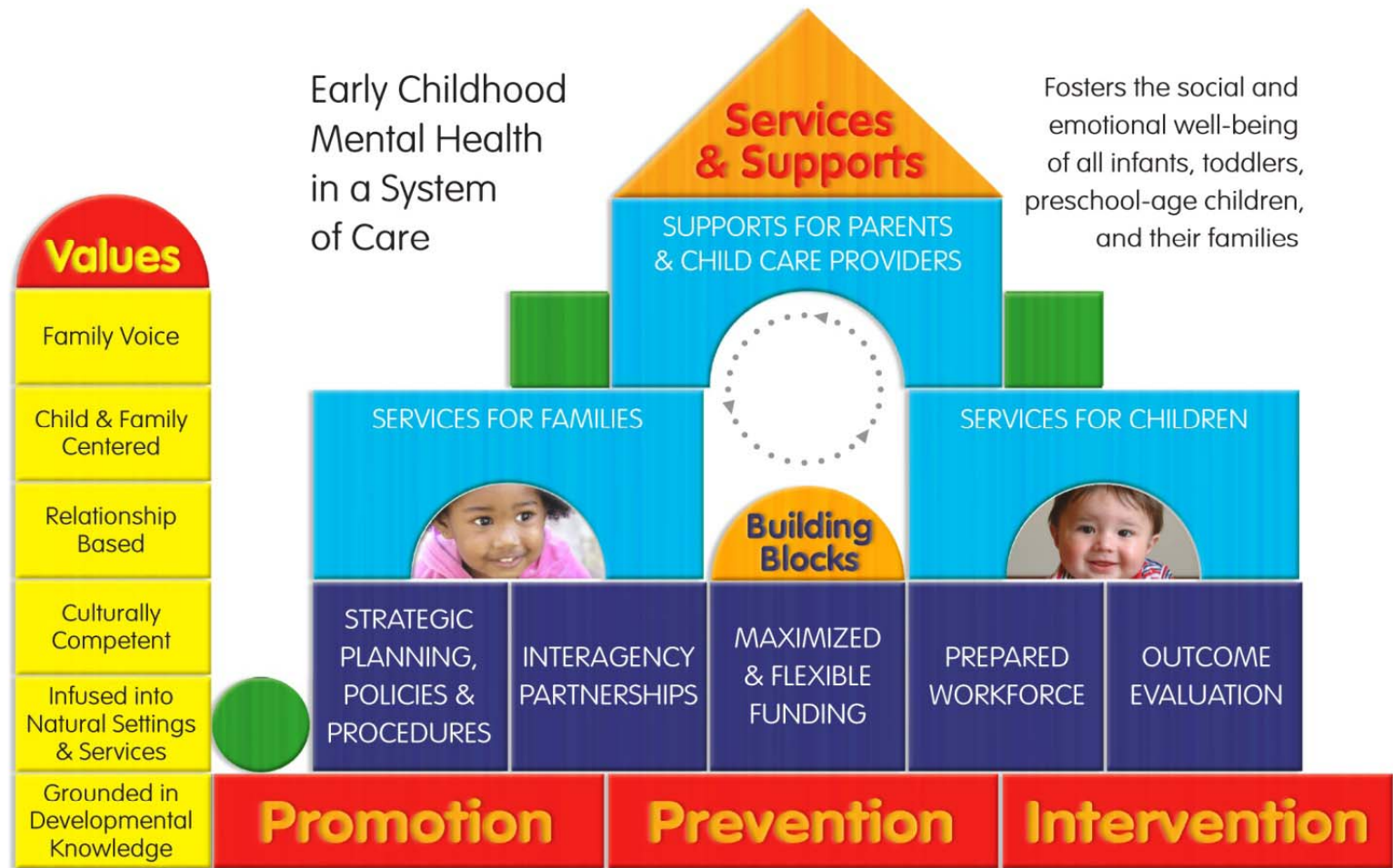


Program Infrastructure Elements



- ★ Clear vision
- ★ Strong leadership
- ★ A clearly defined program model /ECMH services
 - Clear organizational structure and communication
 - Strong hiring/training for qualified/supported staff
 - Accountability and fidelity to the model
- ★ Evaluation
- ★ Strategic partnerships and community engagement
- ★ Funding
- ★ Policy

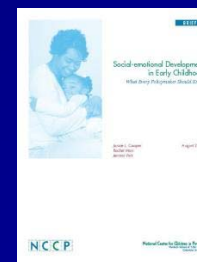
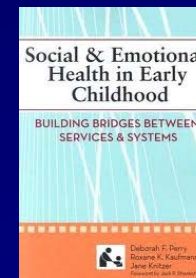
ECMH and ECMHC in a System of Care



Source: Developed by Roxane Kaufmann, GUCCHD; design by: Lucia Foley, Hampshire Educational Collaborative

Resources

- ★ *Social & Emotional Health in Early Childhood: Building Bridges Between Services & Systems*
<http://www.brookespublishing.com/store/books/perry-67823/index.htm>
- ★ *Spending Smarter: A Funding Guide for Policy Makers, Families, Advocates, and Service Providers*
http://nccp.org/publications/pub_634.html
- ★ *Social Emotional Development in Early Childhood: What Every Policymaker Should Know*
http://www.nccp.org/publications/pdf/text_882.pdf
- ★ *Building Systems of Care: A Primer*
<http://gucchd.georgetown.edu/72377.html>
- ★ *The Sustainability of Systems of Care for Children's Mental Health: Lessons Learned*
<http://www.springerlink.com/content/0n1q14418r352226/>



Resources

- ★ *What Works?* study & Resource Compendium

<http://gucchd.georgetown.edu/78358.html>

<http://gucchd.georgetown.edu/products/78366.html>



- ★ *Center for Early Childhood Mental Health Consultation*

<http://www.ecmhc.org>



- ★ *Early Childhood Mental Health Consultation: An Evaluation Toolkit (2007)*

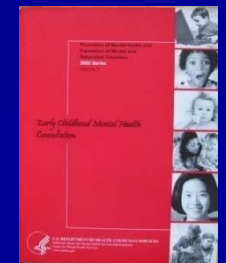
<http://gucchd.georgetown.edu/72407.html>



- ★ *Early Childhood Mental Health Consultation (2000; 2005) & A Training Guide for the Early Childhood Services Community*

<http://mentalhealth.samhsa.gov/publications/allpubs/svp05-0151/>

<http://mentalhealth.samhsa.gov/publications/allpubs/svp05-0151B/>



For More Information

★ Marla Himmeger

Marla.Himmeger@mh.ohio.gov

★ Karen Freel

KarenF@ounceofprevention.org

★ Ashleigh Kirk

akirk@voices4kids.org

★ Geoff Nagle

gnagle@tulaned.edu

What Next?

- ★ Building consensus
- ★ New partners/new approaches
- ★ Rigorous research and evaluation
- ★ Reimbursement
- ★ Thanks to so many

After the Webinar

- ★ Evaluation – today’s webinar and overall
- ★ Unaddressed questions/archives on webpage
- ★ For any webinar follow-up concerns, contact
 - Kathy Hepburn, ksh@georgetown.edu

Thank You